

Write your name here

Surname

Other names

**Pearson Edexcel
International GCSE**

Centre Number

--	--	--	--	--	--

Candidate Number

--	--	--	--	--	--

Business Studies

Wednesday 25 May 2016 – Morning
Time: 2 hours

Paper Reference

4BS0/01

You do not need any other materials.

Total Marks

Instructions

- Use **black** ink or ball-point pen.
- **Fill in the boxes** at the top of this page with your name, centre number and candidate number.
- There are two sections for this paper – Section A and Section B.
- Answer **all** questions.
- Answer the questions in the spaces provided
– *there may be more space than you need.*

Information

- The total mark for this paper is 100.
- The marks for **each** question are shown in brackets
– *use this as a guide as to how much time to spend on each question.*
- A calculator may be used.

Advice

- Read each question carefully before you start to answer it.
- Try to answer every question.
- Check your answers if you have time at the end.

Turn over ►

P45868RA

©2016 Pearson Education Ltd.

1/1/1/1/1/1/1/e2/1



P 4 5 8 6 8 R A 0 1 2 0

PEARSON

FORMULAE FOR INTERNATIONAL GCSE BUSINESS STUDIES

Gross Profit Ratio

Gross Profit = Sales revenue – Cost of goods sold

$$\text{Gross Profit ratio} = \frac{\text{Gross profit}}{\text{Sales revenue}} \times 100$$

Net Profit Ratio

Net Profit = Gross Profit – Overheads

$$\text{Net Profit ratio} = \frac{\text{Net profit before tax}}{\text{Sales revenue}} \times 100$$

Return On Capital Employed (ROCE)

$$\text{ROCE} = \frac{\text{Net profit before tax}}{\text{Net capital employed}} \times 100$$

Current Ratio

$$\text{Current ratio} = \frac{\text{Current assets}}{\text{Current liabilities}}$$

Acid Test Ratio

$$\text{Acid Test ratio} = \frac{\text{Current assets} - \text{Stock}}{\text{Current liabilities}}$$

DO NOT WRITE IN THIS AREA

DO NOT WRITE IN THIS AREA

DO NOT WRITE IN THIS AREA





James Morgan is the Managing Director and franchisee of a hotel in London called *The Trafalgar*. *The Trafalgar* is one of 25 hotels operated under the *Blue16* franchise. All its 25 hotels are situated near airports or in the centre of towns and cities. The guests are mainly business people working in the area for a short time or tourists sight-seeing and visiting relatives.

The Trafalgar has 60 bedrooms and is typical of other hotels in the *Blue16* franchise. Staff are employed either on a permanent or temporary basis.

All *Blue16* hotels have facilities that include:

- a restaurant
- a fitness centre
- meeting rooms
- car parking



SECTION A

Answer ALL questions. Write your answers in the spaces provided.

Some questions must be answered with a cross in a box ☒. If you change your mind about an answer, put a line through the box ☒ and then mark your new answer with a cross ☒.

- 1 (a) (i) The fixed and variable costs for *Blue16* are shown in a (1)
- A break-even chart
 - B balance sheet
 - C bank statement
 - D profit and loss account
- (ii) Which department would help an employee with a grievance at work? (1)
- A Production
 - B Human Resources
 - C Research
 - D Marketing
- (iii) Which of the following is **not** part of the channel of distribution? (1)
- A Retailer
 - B Wholesaler
 - C Consumer
 - D Shareholder
- (iv) *Blue16* needs to gather data on customers. Which term describes this? (1)
- A Market share
 - B Market orientation
 - C Market research
 - D Market segmentation
- (v) When James Morgan asks an employee to carry out a task on his behalf, this is (1)
- A recruitment
 - B delegation
 - C selection
 - D interviewing

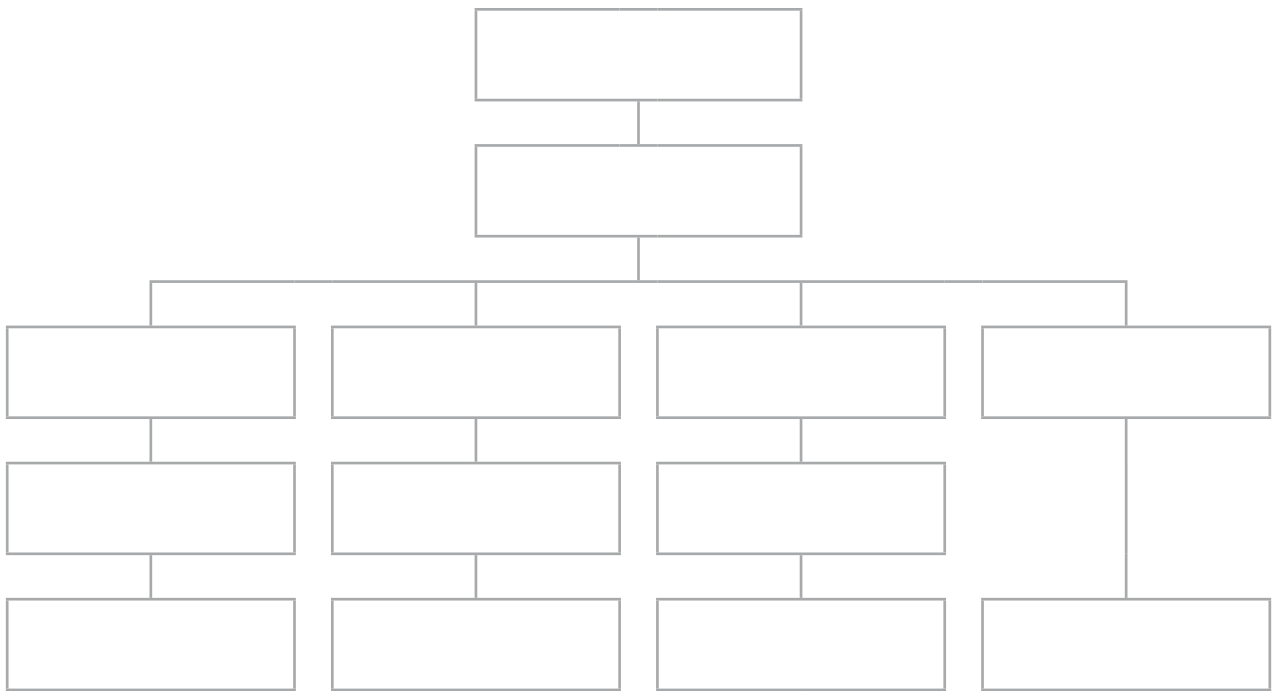


The structure of *The Trafalgar* is the same as the other 24 hotels in the franchise.

- Managing Director – James Morgan
- Managers of Human Resources , Finance, Marketing and Housekeeping
- Employees
- Deputy Managers for Human Resources, Finance and Housekeeping
- Board of Directors

(b) Using the information, complete the organisational chart below.

(5)



The *Trafalgar* has a reputation for offering quality customer service.

(c) (i) What is meant by 'quality customer service'? (2)

.....

.....

(ii) Why is it important for *The Trafalgar* to offer a quality service to its customers? (4)

.....

.....

.....

.....

.....

.....

.....

.....

.....

.....

.....

Hotel ratings classify hotels according to their quality. The more stars the hotels have the better they are supposed to be. For the past five years, *The Trafalgar* has had a 4* rating, with 5* being the best rating.

(d) Analyse why James will want to keep this 4* rating. (4)

.....

.....

.....

.....

.....

.....

.....

.....

.....

.....

.....

(Total for Question 1 = 20 marks)



Every time a guest stays at a *Blue16* hotel, they are asked to complete a questionnaire when they leave.

Questionnaire and feedback form

We would be very grateful if you could answer the following.

By asking our customers for feedback, we are able to monitor the standards of our hotels and ensure that our staff are meeting the needs of you, our customers.

The questionnaire is designed to be anonymous so we are unable to respond to any comments that you make.

Should you have an issue that you require a reply to please email or write to our Customer Services Department.

Reception

Q: On arrival at the hotel, were you checked-in in a pleasant manner? Yes No

Q: Were the reception staff helpful at this point? Yes No

Q: Was your room clean when you arrived? Yes No

Q: Were all the bathroom facilities satisfactory? Yes No

Food

Q: In general, was the quality of the food good? Yes No

Q: How would you rate your breakfast? 1 2 3 4
1 = excellent. 4 = poor.

Q: How would you rate your dinner? 1 2 3 4
1 = excellent. 4 = poor.

Facilities

Q: Did you use any of the other hotel facilities? Yes No

Q: If yes, did they meet your requirements? Yes No

Q: Were there enough facilities for your stay? Yes No

General

Q: Would you use this hotel again? Yes No

Thank you for taking time out of your busy day to help us improve our hotels.



DO NOT WRITE IN THIS AREA

DO NOT WRITE IN THIS AREA

DO NOT WRITE IN THIS AREA

Hotels have to change to meet new conditions. Some of these changes were to comply with the Equality Act (formally the Disability Discrimination Act).

(d) (i) State **two** aims of the Equality Act in relation to disability. (2)

.....

.....

.....

.....

(ii) Discuss how a hotel would comply with this legislation. (4)

.....

.....

.....

.....

.....

.....

.....

.....

.....

.....

(Total for Question 2 = 20 marks)



DO NOT WRITE IN THIS AREA

DO NOT WRITE IN THIS AREA

DO NOT WRITE IN THIS AREA

There are many factors that will influence *Blue16* when locating its hotels.

- (c) (i) Identify **two** factors, other than being near airports and towns, that may influence *Blue16* when deciding where to build its hotels.

(2)

.....

.....

- (ii) Why do you think that *Blue16* has its hotels near airports, towns and city centres?

(4)

.....

.....

.....

.....

.....

.....

.....

.....

.....

.....

(Total for Question 3 = 20 marks)

TOTAL FOR SECTION A = 60 MARKS



SECTION B

4 James recently held a management meeting.

Agenda

- 1 Apologies for absence
- 2 Minutes of last meeting
- 3 Matters arising from the minutes
- 4 Diseconomies of scale
- 5 Advertising
- 6 Any other business

(a) (i) What is meant by 'diseconomies of scale'?

(2)

.....

.....

(ii) Explain how economies of scale can help *Blue16*.

(4)

.....

.....

.....

.....

.....

.....

.....

.....

.....

DO NOT WRITE IN THIS AREA

DO NOT WRITE IN THIS AREA

DO NOT WRITE IN THIS AREA



From time to time, James advertises *The Trafalgar* at his own cost.

(c) Analyse **two** suitable sources that James could use to finance this advertising.

(6)

1

.....

.....

.....

.....

.....

.....

2

.....

.....

.....

.....

.....

.....

(Total for Question 4 = 20 marks)

DO NOT WRITE IN THIS AREA

DO NOT WRITE IN THIS AREA

DO NOT WRITE IN THIS AREA



DO NOT WRITE IN THIS AREA

DO NOT WRITE IN THIS AREA

DO NOT WRITE IN THIS AREA

5 After 10 years as a franchisee, James now wants to start and run his own hotel. He knows hotels are labour-intensive.

(a) Explain why hotels are labour-intensive.

(5)

.....

.....

.....

.....

.....

.....

.....

.....

.....

.....

.....

.....

.....

.....

.....

.....

.....

.....

.....

.....

.....

.....

.....

James has people who have agreed to join him in setting up his new hotel.

(b) Advise James on the most appropriate form of ownership for this business.

(5)

.....

.....

.....

.....

.....

.....

.....

.....

.....

.....

.....

.....

.....

.....

.....

.....

.....

.....

.....

.....

.....

.....

.....



DO NOT WRITE IN THIS AREA

DO NOT WRITE IN THIS AREA

DO NOT WRITE IN THIS AREA

(Total for Question 5 = 20 marks)

TOTAL FOR SECTION B = 40 MARKS
TOTAL FOR PAPER = 100 MARKS



DO NOT WRITE IN THIS AREA

DO NOT WRITE IN THIS AREA

DO NOT WRITE IN THIS AREA

BLANK PAGE

