



Cambridge O Level

CANDIDATE
NAME

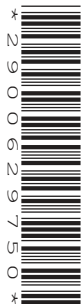
--

CENTRE
NUMBER

--	--	--	--	--

CANDIDATE
NUMBER

--	--	--	--



FASHION & TEXTILES

6130/01

Paper 1 Theory

May/June 2022

2 hours

You must answer on the question paper.

You will need: Ruler
Small piece of fabric, needle and thread

INSTRUCTIONS

- Answer **four** questions in total:
 - Section A: answer **all** parts of Question 1.
 - Section B: answer **three** questions.
- Use a black or dark blue pen.
- Write your name, centre number and candidate number in the boxes at the top of the page.
- Write your answer to each question in the space provided.
- Do **not** use an erasable pen or correction fluid.
- Do **not** write on any bar codes.
- You may use an HB pencil for any diagrams or rough working.
- You should illustrate your answers with clear, bold diagrams wherever necessary.
- You may use a needle and thread and a small piece of fabric to help in making drawings of stitches.
- This fabric should **not** be handed in with your work.

INFORMATION

- The total mark for this paper is 100.
- The number of marks for each question or part question is shown in brackets [].

This document has **20** pages. Any blank pages are indicated.

Section A

Answer **all** questions in this section.

1 Fig. 1.1 is a drawing of the front and back views of a pair of denim jeans.

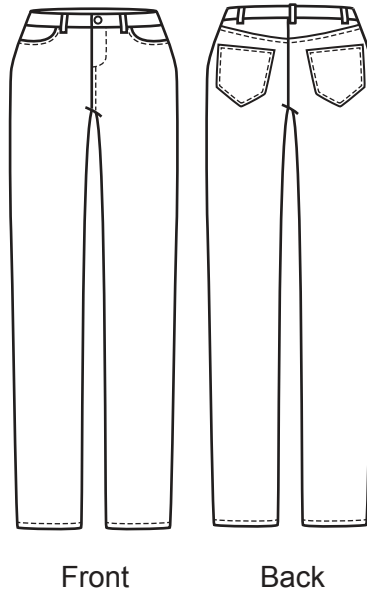


Fig. 1.1

(a) (i) State **one** reason why denim is a suitable fabric for the jeans shown in Fig. 1.1.

..... [1]

(ii) Describe denim fabric.

Appearance

Feel/handle

[2]

(iii) Identify the construction method used to make denim fabric.

..... [1]

(iv) Explain how denim fabric is constructed.

.....
.....
.....
..... [2]

(b) Cotton fibre is used to make denim fabric for the jeans in Fig. 1.1. State **three** performance characteristics of cotton fibre that make it suitable for fabric for denim jeans.

1

2

3 [3]

(c) Complete the table below to show the information shown on a care label for cotton denim jeans. Sketch the symbol in the first column and write an explanation in the second column.

Sketch the symbol	Write an explanation of the symbol
1.	
2.	
3.	

[6]

(f) Denim fabric is dyed with synthetic indigo dye. State **two** ways in which synthetic indigo dye can harm the environment.

.....
..... [2]

(g) (i) Identify **two** ways in which CAM can be used in the production of the jeans shown in Fig. 1.1.

.....
.....
.....
..... [2]

(ii) Suggest **three** ways in which denim fabric left over from factory production of jeans can be recycled.

.....
.....
.....
.....
.....
..... [3]

(iii) Identify **three** production methods for making garments.

.....
.....
..... [3]

(h) Suggest **three** examples of ways in which microencapsulation can be used in garments.

.....
.....
.....
.....
..... [3]

- (i) Identify **one** fabric finish that must be used on a child's pyjamas made from a woven cotton fabric. State the reason why this fabric finish must be used.

.....

..... [2]

[Total: 40]

Section B

Answer **three** questions in this section.

2 (a) (i) Identify **two** materials used to make polyester fibre.

.....
..... [2]

(ii) Explain how polyester fibre is made.

.....
.....
.....
.....
.....
..... [3]

(iii) Identify **two** synthetic fibres other than polyester.

.....
..... [2]

(iv) Identify **one** performance characteristic of polyester fibre which makes it suitable for the manufacture of pleated skirts.

..... [1]

3 (a) (i) Explain how to work satin stitch by hand. You may use labelled diagrams to support your answer.

.....

.....

.....

.....

.....

.....

.....

.....

.....

[4]

- (ii) Sketch and label a design for an embroidery motif using satin stitch and **one** other named embroidery stitch.

[4]

4 (a) Identify **two** fastenings to use on a clutch bag.

.....
..... [2]

(b) (i) State the correct order of work to make a narrow machine stitched hem.

.....
.....
.....
.....
.....
.....
.....
.....
.....
..... [4]

(ii) Identify **two** methods used to neaten the raw edge of a seam.

.....
..... [2]

(iii) Assess the factors to consider when deciding whether to use a hand stitched hem or a machine stitched hem.

.....
.....
.....
.....
.....
.....
.....
.....
.....
.....
.....
.....
.....
.....
.....
.....
.....
.....
.....
.....
..... [6]

- 5 Fig. 5.1. is a drawing of the front and back views of a child's dress.

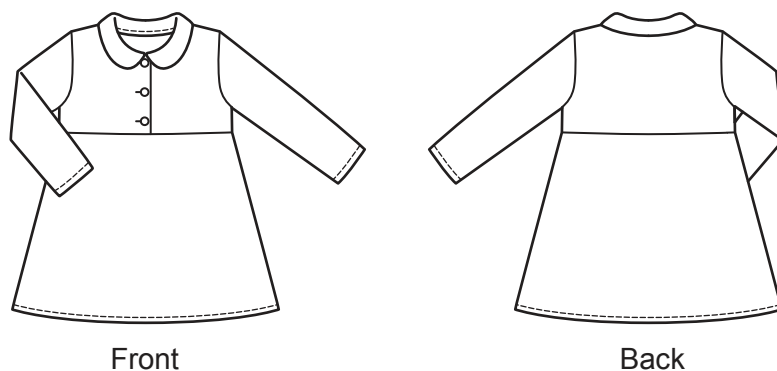


Fig. 5.1

- (a) (i) Identify the collar shown in the drawing of the child's dress in Fig. 5.1.

..... [1]

- (ii) The processes used to make the dress in Fig. 5.1 are shown in the table below. Write the processes used to make the dress in the correct order in the numbered boxes in the right-hand column.

Process	Correct order to make dress
Make and attach collar	1
Attach skirt to bodice	2
Stitch shoulder seams	3
Stitch side seams	4
Make and insert sleeves	5
Make and attach facings for front opening	6

[6]

- (iii) Identify **one** way of adding fullness to the skirt of the dress shown in Fig. 5.1.

..... [1]

6 (a) (i) Explain how to use batik to apply a design to fabric.

You may use labelled diagrams to support your answer.

.....

.....

.....

.....

.....

.....

.....

.....

.....

.....

.....

[6]

(ii) Batik is a resist method of using colour to decorate fabric. Identify **one** other resist method of colouring fabric.

..... [1]

(iii) State **one** reason why dyes must be stored in a safe place.

..... [1]

BLANK PAGE

Permission to reproduce items where third-party owned material protected by copyright is included has been sought and cleared where possible. Every reasonable effort has been made by the publisher (UCLES) to trace copyright holders, but if any items requiring clearance have unwittingly been included, the publisher will be pleased to make amends at the earliest possible opportunity.

To avoid the issue of disclosure of answer-related information to candidates, all copyright acknowledgements are reproduced online in the Cambridge Assessment International Education Copyright Acknowledgements Booklet. This is produced for each series of examinations and is freely available to download at www.cambridgeinternational.org after the live examination series.

Cambridge Assessment International Education is part of Cambridge Assessment. Cambridge Assessment is the brand name of the University of Cambridge Local Examinations Syndicate (UCLES), which is a department of the University of Cambridge.