



Cambridge IGCSE™

CANDIDATE
NAME

--

CENTRE
NUMBER

--	--	--	--	--

CANDIDATE
NUMBER

--	--	--	--



MUSIC

0410/13

Paper 1 Listening

May/June 2020

Approximately 1 hour 15 minutes

You must answer on the question paper.

You will need: Insert (enclosed)

INSTRUCTIONS

- Answer **all** questions in Sections **A**, **B** and **C**.
- For each question, tick (✓) one of the boxes to show the most appropriate answer, or write your answer in the space provided.
- Section **D**: answer **all** questions on the **one Set Work** you have studied, in the space provided.
- There will be time for you to look at the questions before you hear each extract of music. You may find it helpful to make notes on the music as you listen.
- Use a black or dark blue pen.
- Write your name, centre number and candidate number in the boxes at the top of the page.
- Do **not** use an erasable pen or correction fluid.
- Do **not** write on any bar codes.
- You may use an HB pencil for any music.
- The insert contains the scores for Music C1 and your chosen Set Work in Section D.

INFORMATION

- The total mark for this paper is 70.
- The number of marks for each question or part question is shown in brackets [].

This document has **16** pages. Blank pages are indicated.

SECTION A [16 marks]

You will hear two examples of music, selected from the Baroque, Classical or Romantic periods or the Twentieth Century.

Each extract will be played **four** times, with a pause between each playing.

Music A1

You will hear an extract from a piece of music for voices and instruments. The words are printed below. Read through questions **1** to **4**.

*From Chicago
To New York
One of the fastest trains*

1 Which orchestral family plays in this extract?

- Brass
- Percussion
- Strings
- Woodwind

[1]

2 Describe **two** ways in which the music changes for the words 'one of the fastest trains'.

.....
.....
..... [2]

3 How is the vocal line related to the instrumental music?

.....
..... [1]

4 (a) Which style of music is this?

- Impressionism
- Jazz
- Minimalism
- Neo-classicism

[1]

(b) Give **two** reasons for your answer.

.....

.....

..... [2]

(c) Who composed this music?

- Debussy
- Gershwin
- Poulenc
- Reich

[1]

Music A2

You will hear an extract from an instrumental piece. Look at the skeleton score below and read through questions 5 to 8.

1 2 3 4 5

6 7 8 9

10 11 12 13

Extract continues...

5 Name the instrument that plays the printed melody.

.....

[1]

6 What is the texture of the music?

.....

[1]

7 Describe **two** changes when the music continues after the printed extract.

.....

.....

..... [2]

8 (a) Which of the following best describes this music?

- March
- Opera
- Oratorio
- Waltz

[1]

(b) Give **three** reasons for your answer.

.....

.....

.....

..... [3]

SECTION B [22 marks]

You will hear three extracts of music from around the world. Each extract will be played **four** times, with a pause between each playing.

Music B1

You will hear an extract from a piece for instruments. Read through questions **9** to **11**.

9 (a) Name the melody instrument.

..... [1]

(b) How is the sound produced on this instrument?

..... [1]

10 Which instrument joins later in the extract?

..... [1]

11 (a) Where does this music come from?

..... [1]

(b) Apart from the instruments used, give **two** reasons for your answer.

.....
.....
..... [2]

Music B2

You will hear an extract from a piece for instruments. Look at the skeleton score below and read through questions 12 to 14.

12 (a) Name the instrument that plays the printed melody.
 [1]

(b) What compositional device is used in bars 3–4?
 [1]

13 After the printed extract the melody is repeated. Describe **two** differences in the next eight bars.

 [2]

14 (a) Where does this music come from?
 [1]

(b) Apart from the instruments used, give a reason for your answer.

 [1]

Music B3 (World Focus: Arabic Music)

You will hear **three** passages performed by a *Takht* ensemble, separated by short gaps. Read through questions **15** to **18**.

15 (a) Name the instrument in the **first** passage.

..... [1]

(b) What is this section of a piece called?

..... [1]

(c) Describe **two** features which are typical of this section.

.....
.....
..... [2]

16 (a) Name the texture at the start of the **second** passage.

..... [1]

(b) Describe what the singer is doing when he enters.

.....
.....
..... [2]

17 Name and describe the instrument heard in the **third** passage.

.....
.....
..... [2]

18 How did music by *Takht* ensembles reach a wider audience in the later twentieth century?

.....
..... [1]

SECTION C [16 marks]

You will hear one extract of music. The extract will be played **four** times, with a pause between each playing.

Music C1

You will hear an extract from a piece for instruments. Look at the skeleton score, which you will find on the separate Insert, and read through questions **19** to **25**. Answer the questions in this booklet.

19 What compositional device is used in bar 4?

..... [1]

20 Describe the texture in bars 7–10.

.....
.....
..... [2]

21 Name the bracketed interval in bar 11.

..... [2]

22 (a) Name the key and cadence in bars 13–14.

Key:

Cadence:

[2]

(b) What is the relationship of this key to the tonic key of the extract?

..... [1]

23 The melody is incomplete in bars 17–18. Fill in the missing notes on the staff below. The rhythm has been given to help you.

[3]

24 (a) Which of the following best describes the **printed** extract?

- March
- Minuet
- Sonata
- Waltz

[1]

(b) Give a reason for your answer.

..... [1]

(c) What is the name for the section which is heard after the printed extract?

..... [1]

25 This music was written in the Classical period. What features of the extract are typical of this period?

.....

.....

..... [2]

SECTION D [16 marks]

Set Work

Answer all the questions on **one** set work:

either Mozart: *Piano Concerto No. 21*, K. 467: Movement 1 (questions 26 to 34)

or Rossini: *William Tell Overture* (questions 35 to 44)

Mozart: *Piano Concerto No. 21*

You will hear two extracts. Each extract will be played **twice**, with a pause between each playing.

Music D1

Look at the skeleton score in the Insert, and read through questions 26 to 28.

26 (a) From which section of the movement is this extract taken?

..... [1]

(b) Which theme is heard from bar 1?

..... [1]

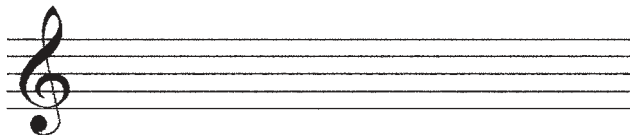
(c) Describe **two** ways in which this theme is different from when it was first played in the movement, before the recorded extract.

.....

.....

..... [2]

27 On the staff below, write the first two notes of the viola part in bar 11 in the treble clef.



[2]

28 (a) Which of the following is played by the flute and oboes from bars 13–18?

- Canon
- Pedal
- Sequence
- Suspension

[1]

(b) Where is the music played by the strings in bars 13–18 derived from?

..... [1]

Music D2

Look at the skeleton score, which you will find in the separate Insert, and read through questions 29 to 34.

29 Describe precisely what is played by the flute in bars 1–2 and 5–6.

.....
 [1]

30 Name the key and cadence in bars 16–17.

Key:

Cadence:

[2]

31 (a) Which of the following is the correct order of instruments in the woodwind link in bars 17–22?

Flute, bassoon, oboe

Flute, oboe, bassoon

Oboe, bassoon, flute

Oboe, flute, bassoon

[1]

(b) How does this woodwind link prepare for the entry of the piano in bar 23?

.....
 [1]

32 What chord is played by the woodwind in bars 25–28?

..... [1]

33 What might the soloist add after the printed note in bar 28?

.....
 [1]

34 Who was the soloist in the first performance of this concerto?

..... [1]

Rossini: *William Tell Overture*

Music D3

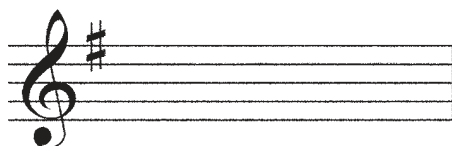
Look at the skeleton score, which you will find in the separate Insert, and read through questions 35 to 39.

35 What do the timpani, cellos and basses play in bars 1–14?

- Alberti bass
- Dominant pedal
- Ground bass
- Tonic pedal

[1]

36 On the staff below, write the clarinet part in bar 12 at sounding pitch. The key signature has been given.



[2]

37 What is the key of the music at bar 15?

.....

[1]

38 Describe the different layers of the music in bars 15–22.

.....

[3]

39 What harmonic device is heard in bars 39–46?

.....

[1]

Music D4

Look at the skeleton score, which you will find in the separate Insert, and read through questions 40 to 44.

40 What is the tempo marking of this section of the overture?

..... [1]

41 What instrument plays the melody in bars 1–4?

..... [1]

42 (a) What does this music represent?

..... [1]

(b) How does the music reflect this?

.....

 [2]

43 What does the flute play in bars 22–26?

.....

 [2]

44 When was the opera *William Tell* first performed?

- 1792
 1829
 1846
 1868

[1]

Permission to reproduce items where third-party owned material protected by copyright is included has been sought and cleared where possible. Every reasonable effort has been made by the publisher (UCLES) to trace copyright holders, but if any items requiring clearance have unwittingly been included, the publisher will be pleased to make amends at the earliest possible opportunity.

To avoid the issue of disclosure of answer-related information to candidates, all copyright acknowledgements are reproduced online in the Cambridge Assessment International Education Copyright Acknowledgements Booklet. This is produced for each series of examinations and is freely available to download at www.cambridgeinternational.org after the live examination series.

Cambridge Assessment International Education is part of the Cambridge Assessment Group. Cambridge Assessment is the brand name of the University of Cambridge Local Examinations Syndicate (UCLES), which itself is a department of the University of Cambridge.