



# Cambridge IGCSE™

---

**MUSIC**

**0410/13**

Paper 1 Listening

**May/June 2020**

INSERT

**Approximately 1 hour 15 minutes**

---

**INFORMATION**

- This insert contains the scores for Music C1 and your chosen Set Work in Section D.
- You may annotate this insert and use the blank spaces for planning. **Do not write your answers** on the insert.



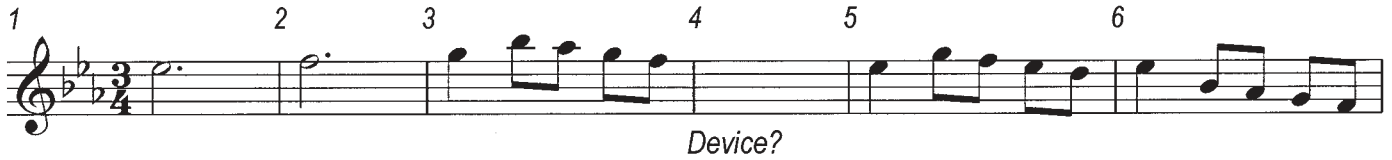
---

This document has **8** pages. Blank pages are indicated.

## INSERT FOR MUSIC C1

Answer the questions in the Question Paper, not on this Insert. The repeats are not played on the recording.

1 2 3 4 5 6



*Device?*

7 8 9 10 11 12



*Texture?* *Interval?*

13 14 15 16 17 18



*Key and cadence?* *Complete melody*

19 20 21 22 23 24



25 26 27 28 29 30



31 32 33 34 35 36



*Extract continues...*

## INSERT FOR MUSIC D1

Answer the questions in the Question Paper, not on this Insert.

1 Orchestra 2 3 4

Section? Theme?

5 Piano 6 7

8 9 10 Orchestra

11 12

Violas

Write in treble clef

13 Piano 14

Flutes and Oboes? Strings?

15 16

17 18 19

Extract continues...

## INSERT FOR MUSIC D2

Answer the questions in the Question Paper, not on this Insert.

1 Orchestra 2 3 4

Flutes?

5 6 7 8

9 10 11 12 13

14 15 16 17 18

Key and cadence? Instrument order? Degree of scale?

19 20 21 22

23 Piano 24 25

Woodwind chord?

26 27 28

Piano?

## INSERT FOR MUSIC D3

Answer the questions in the Question Paper, not on this Insert.

1 2 Upper woodwind 3 4

Bassoons

5 6 7 8

9 Clarinet in A 10 11 12 13 14

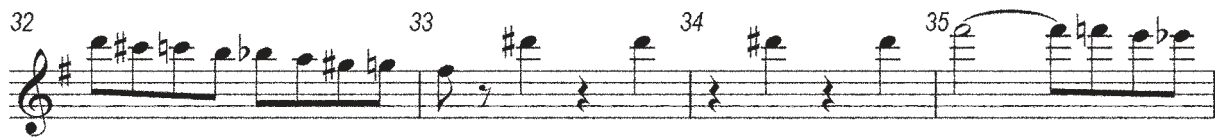
Transpose

15 Flute 16 17 18 19

Key? Texture?

20 21 22 23

24 25 26 27



*Harmonic device?*



Extract continues...

## INSERT FOR MUSIC D4

Answer the questions in the Question Paper, not on this Insert.

1 2 3 3 3 3 3 4 tr 5

*Tempo? Instrument?*

6 7 8 9 tr 10

11 12 13 14 tr 15

16 17 18 19 tr 20

21 22 23

*Flute?*

24 25 26

**BLANK PAGE**

---

Permission to reproduce items where third-party owned material protected by copyright is included has been sought and cleared where possible. Every reasonable effort has been made by the publisher (UCLES) to trace copyright holders, but if any items requiring clearance have unwittingly been included, the publisher will be pleased to make amends at the earliest possible opportunity.

To avoid the issue of disclosure of answer-related information to candidates, all copyright acknowledgements are reproduced online in the Cambridge Assessment International Education Copyright Acknowledgements Booklet. This is produced for each series of examinations and is freely available to download at [www.cambridgeinternational.org](http://www.cambridgeinternational.org) after the live examination series.

Cambridge Assessment International Education is part of the Cambridge Assessment Group. Cambridge Assessment is the brand name of the University of Cambridge Local Examinations Syndicate (UCLES), which itself is a department of the University of Cambridge.