



Cambridge IGCSE™

GEOGRAPHY

0460/41

Paper 4 Alternative to Coursework

October/November 2021

INSERT

1 hour 30 minutes

INFORMATION

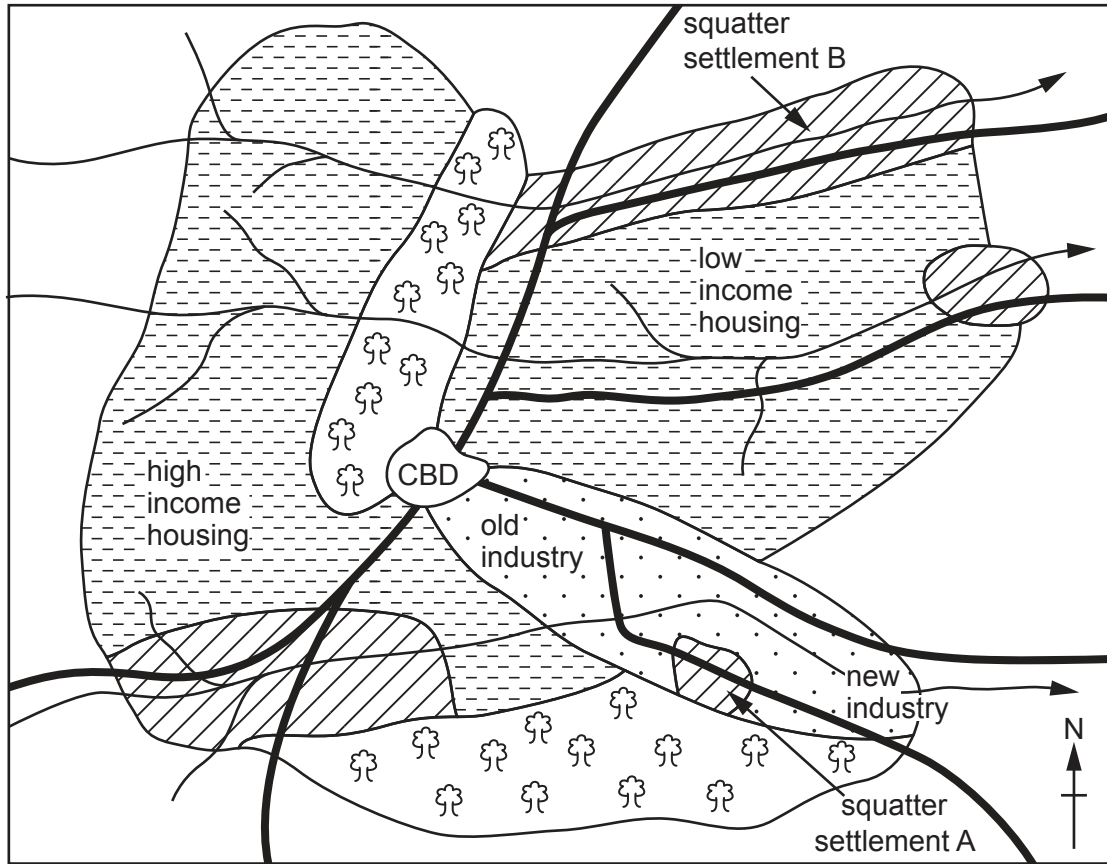
- This insert contains additional resources referred to in the questions.
- You may annotate this insert and use the blank spaces for planning. **Do not write your answers** on the insert.



This document has **8** pages.

Fig. 1.1 for Question 1

Land use in the city in Kenya



Key

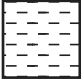





- | | | | |
|---|---------------------------------------|---|-----------|
|  | housing areas |  | main road |
|  | areas containing squatter settlements |  | river |
|  | industrial zone | | |
|  | parkland and woodland | | |

Table 1.1 for Question 1

Results of questions 1–4 in the questionnaire

	squatter settlement A (% of answers)	squatter settlement B (% of answers)
building material		
brick	5	68
corrugated iron	71	27
scrap materials	24	5
water supply		
tap in the home	5	65
standpipe	52	28
collect rainwater or from river	43	7
electricity		
city authority	5	67
cable to official supply	46	29
no electricity	49	4
housing tenure		
own the house	0	27
rent from city authority	5	42
rent from private landlord	0	26
no legal tenure	95	5

Housing tenure is the way in which a person gets the right to live in a house.

Table 1.2 for Question 1

Results of question 5 (How do you earn a living?) in the questionnaire

	squatter settlement A (% of answers)	squatter settlement B (% of answers)
formal jobs		
work in a factory	7	26
work in a shop	16	24
work for the city authority	4	9
informal jobs		
selling homemade items on the street	45	22
other informal job	28	19

Fig. 1.7 for Question 1

Ways to deal with the growth of squatter settlements

Method 1

The city authorities look for new squatter settlements and pull down the houses which are being built. If a family has moved in before the authorities find them, they can stay there temporarily. They can only build their house with wood or corrugated iron, not brick. This means the homes don't become permanent and can be easily removed in the future.

Method 2

The city authorities allow people to build their own houses but they must be made of brick not scrap materials. The authorities provide materials to build houses and services like roads, water supply, sewers and electricity, and the local people provide the labour to do the work. People are encouraged to open shops and workshops.

Fig. 2.1 for Question 2

A quadrat

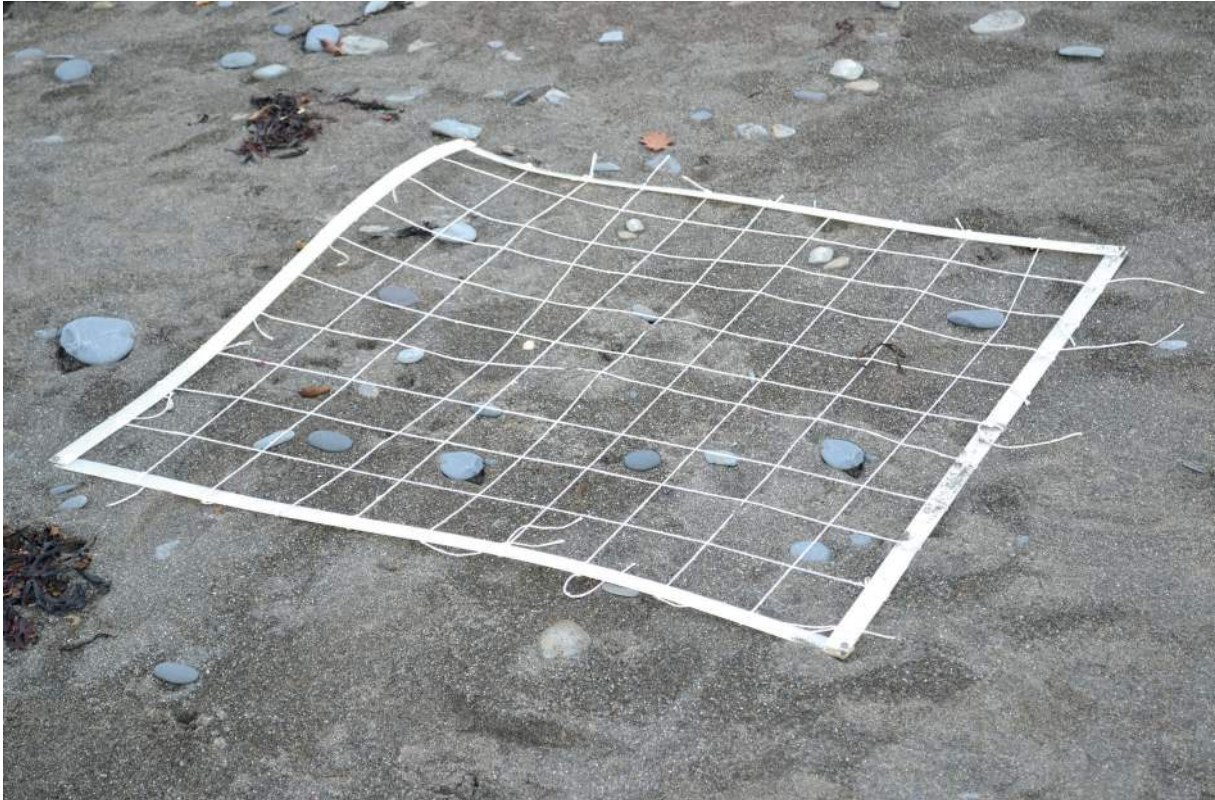


Table 2.1 for Question 2

Results of fieldwork classification

Beach X

distance from low water mark (m)	type of beach material and size (%)		
	sand (less than 2 mm)	shingle (2–20 mm)	pebbles (more than 20 mm)
5	80	15	5
25	40	35	25
45	0	50	50

Beach Y

distance from low water mark (m)	type of beach material and size (%)		
	sand (less than 2 mm)	shingle (2–20 mm)	pebbles (more than 20 mm)
5	90	10	0
25	95	5	0
45	100	0	0

Fig. 2.4 for Question 2

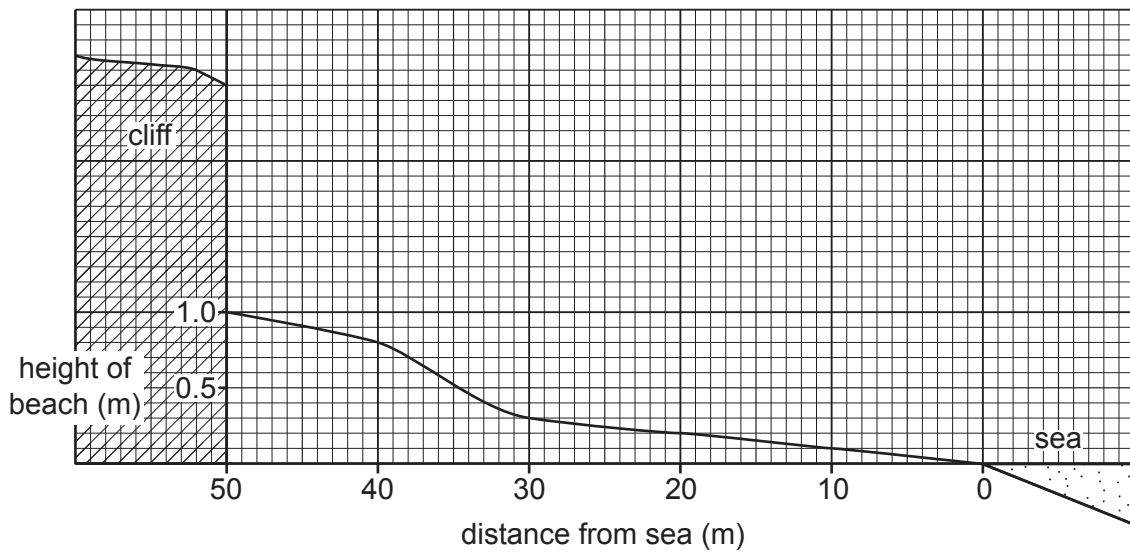
Measuring a beach profile



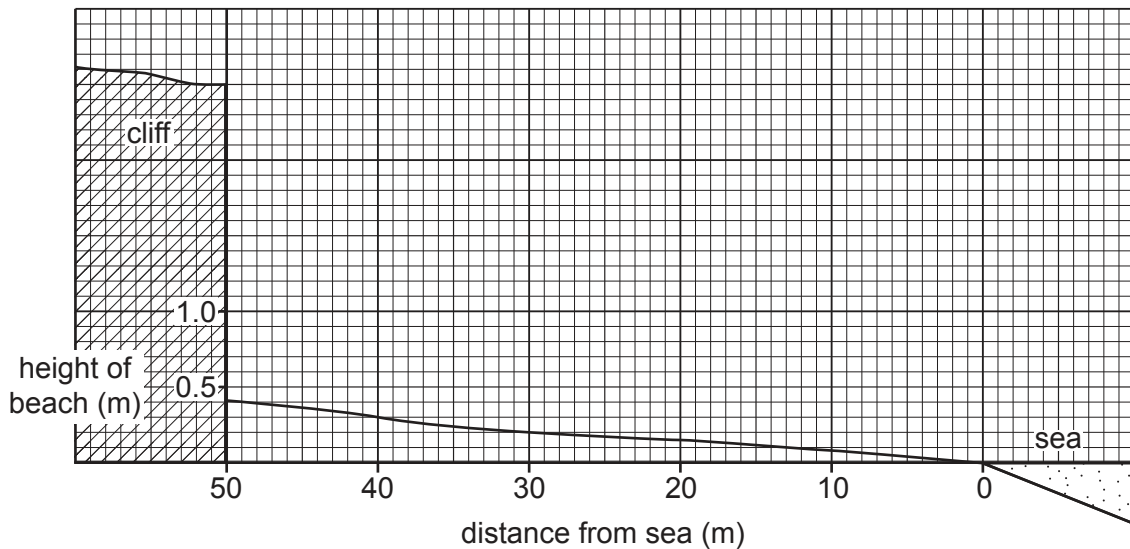
Fig. 2.5 for Question 2

Beach profiles

Profile at beach X



Profile at beach Y



The boundaries and names shown, the designations used and the presentation of material on the maps contained in this question paper/insert do not imply official endorsement or acceptance by Cambridge Assessment International Education concerning the legal status of any country, territory, or area or any of its authorities, or of the delimitation of its frontiers or boundaries.

Permission to reproduce items where third-party owned material protected by copyright is included has been sought and cleared where possible. Every reasonable effort has been made by the publisher (UCLES) to trace copyright holders, but if any items requiring clearance have unwittingly been included, the publisher will be pleased to make amends at the earliest possible opportunity.

To avoid the issue of disclosure of answer-related information to candidates, all copyright acknowledgements are reproduced online in the Cambridge Assessment International Education Copyright Acknowledgements Booklet. This is produced for each series of examinations and is freely available to download at www.cambridgeinternational.org after the live examination series.

Cambridge Assessment International Education is part of the Cambridge Assessment Group. Cambridge Assessment is the brand name of the University of Cambridge Local Examinations Syndicate (UCLES), which itself is a department of the University of Cambridge.