

---

**GEOGRAPHY**

**9696/11**

Paper 1 Core Geography

**October/November 2014**

INSERT

**3 hours**

---

**READ THESE INSTRUCTIONS FIRST**

This Insert contains all the Figures and the Photograph referred to in the questions.



---

This document consists of **7** printed pages and **1** blank page.

Fig. 1 for Question 1

The plan form of a river channel

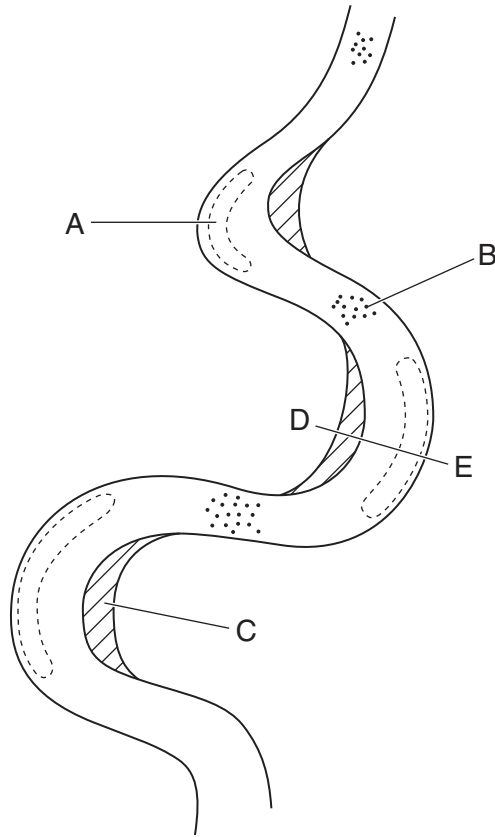


Fig. 2 for Question 2

The trend in five year average global temperature between 1860 and 2010

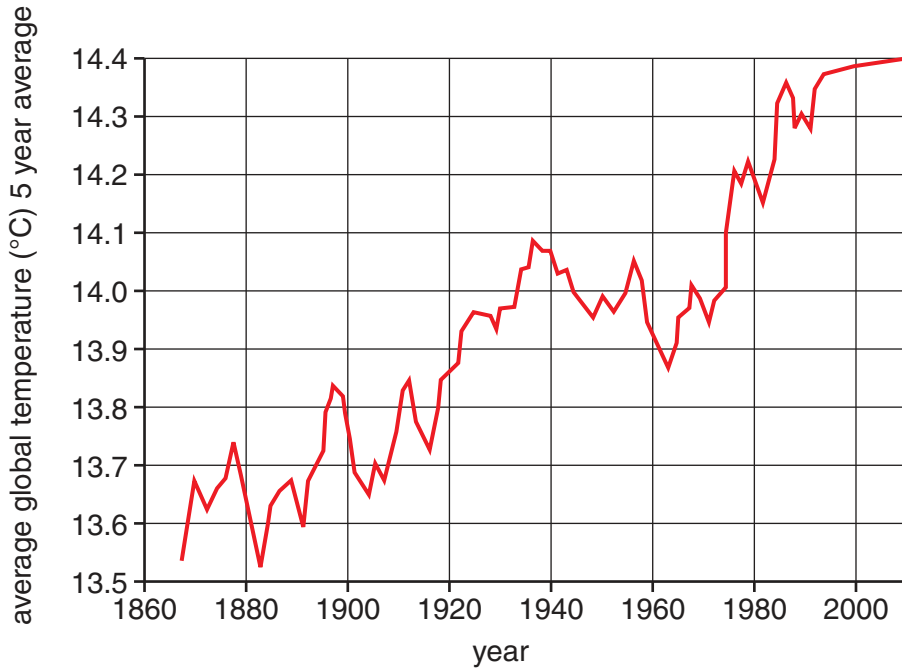


Fig. 3 for Question 3

Some features associated with plate tectonics

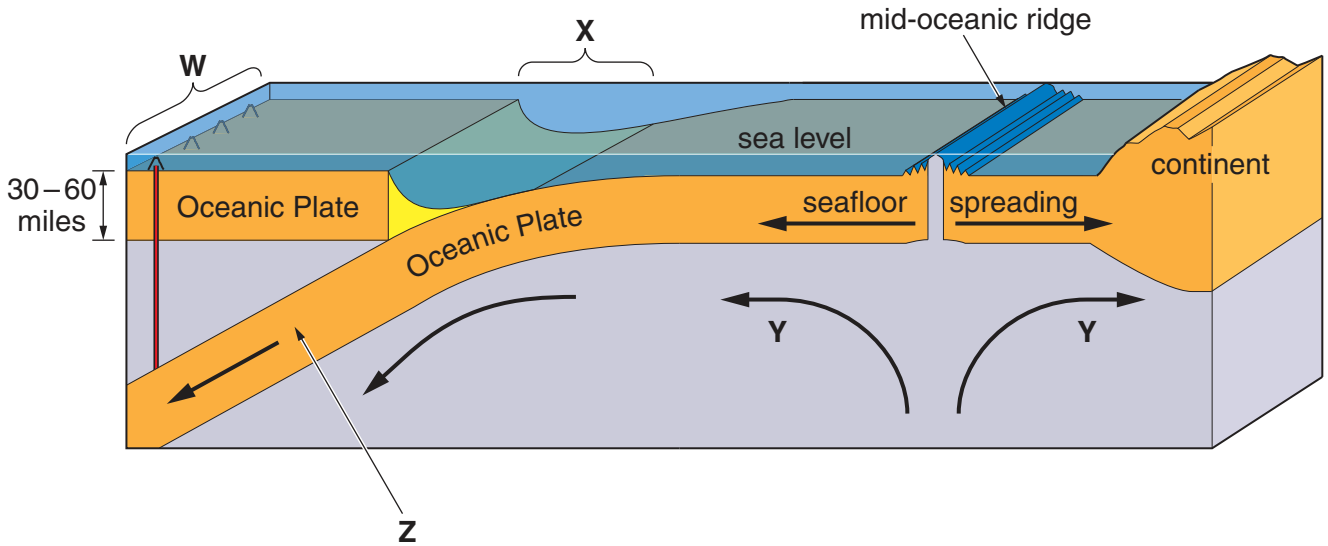
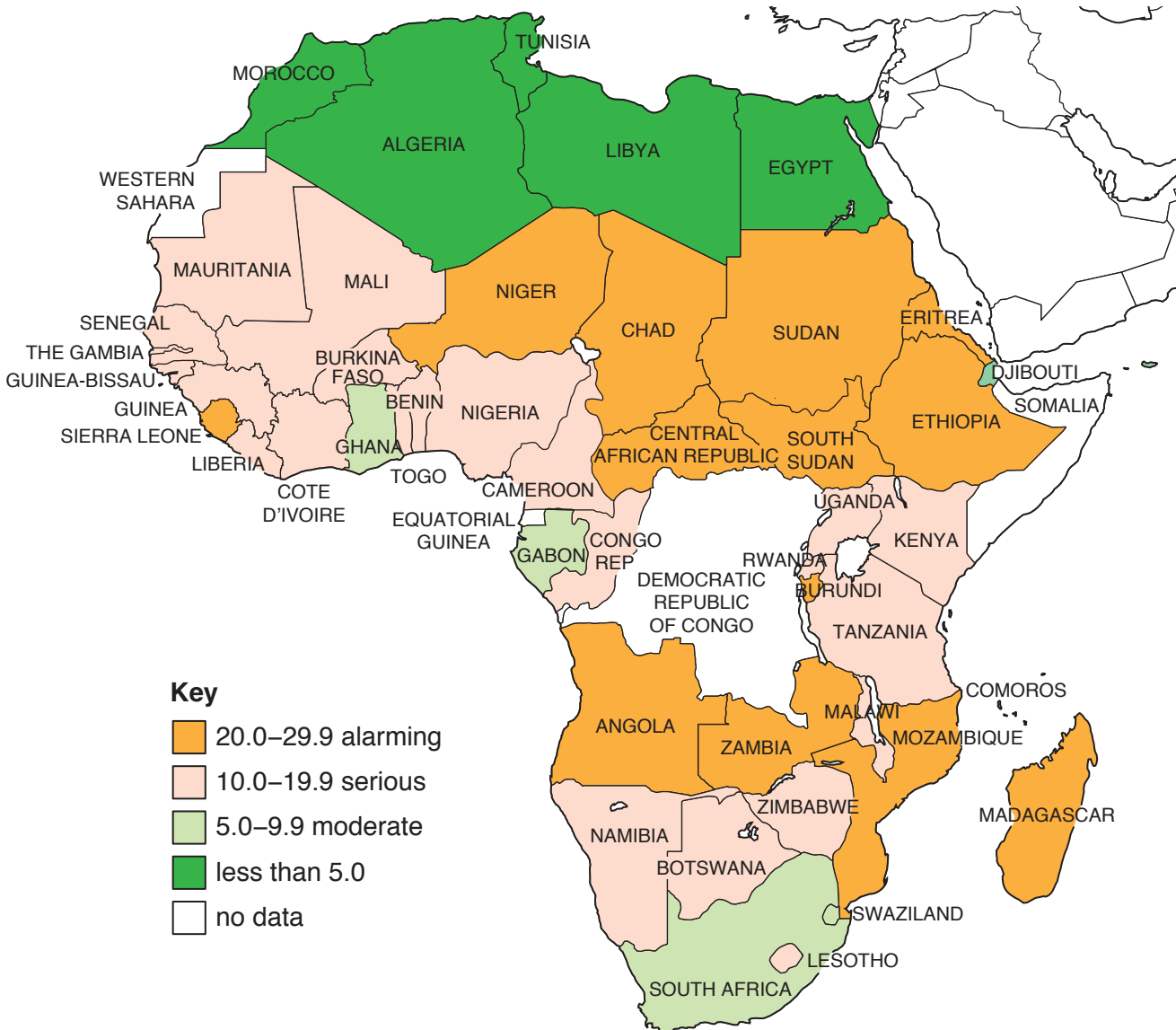


Fig. 4 for Question 4

## The global hunger index (GHI) for Africa in 2012



GHI is based on the child mortality rate, the proportion of children underweight and the proportion of the population undernourished.

Figs 5A and 5B for Question 5

Age/sex pyramids for the United Arab Emirates in 1950 and 2010

Fig. 5A

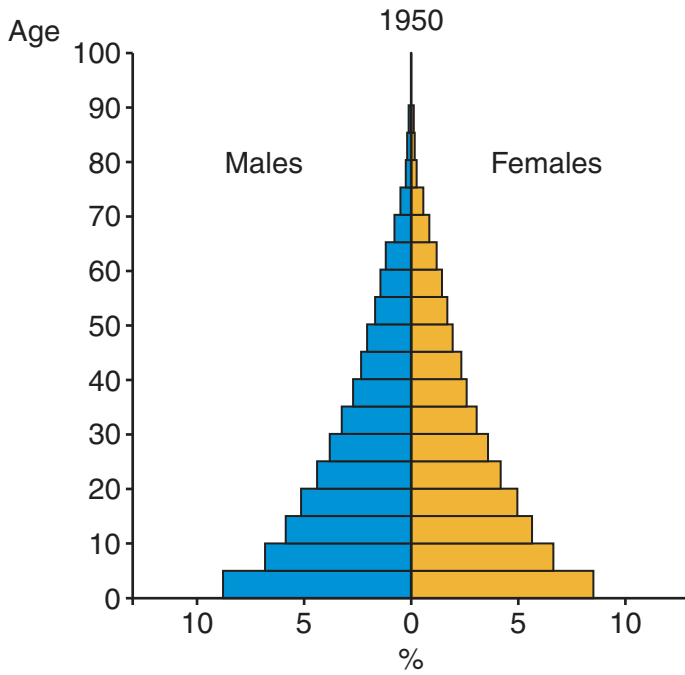
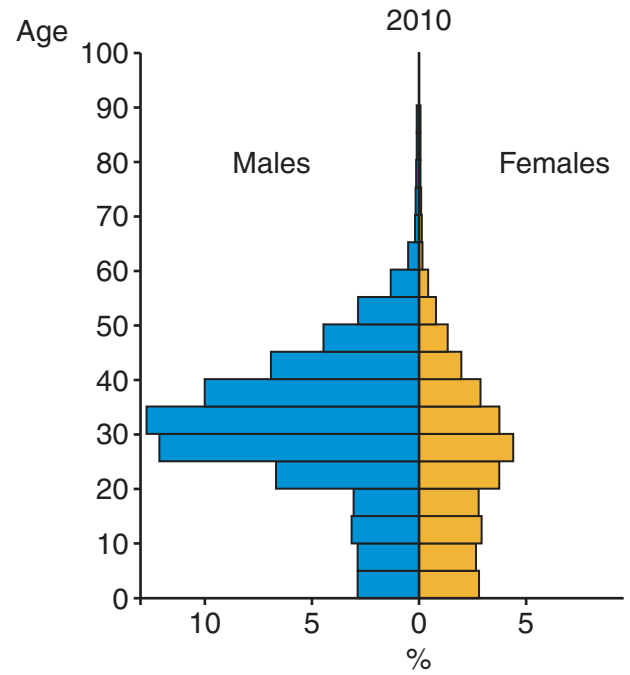


Fig. 5B



Key

- Males
- Females



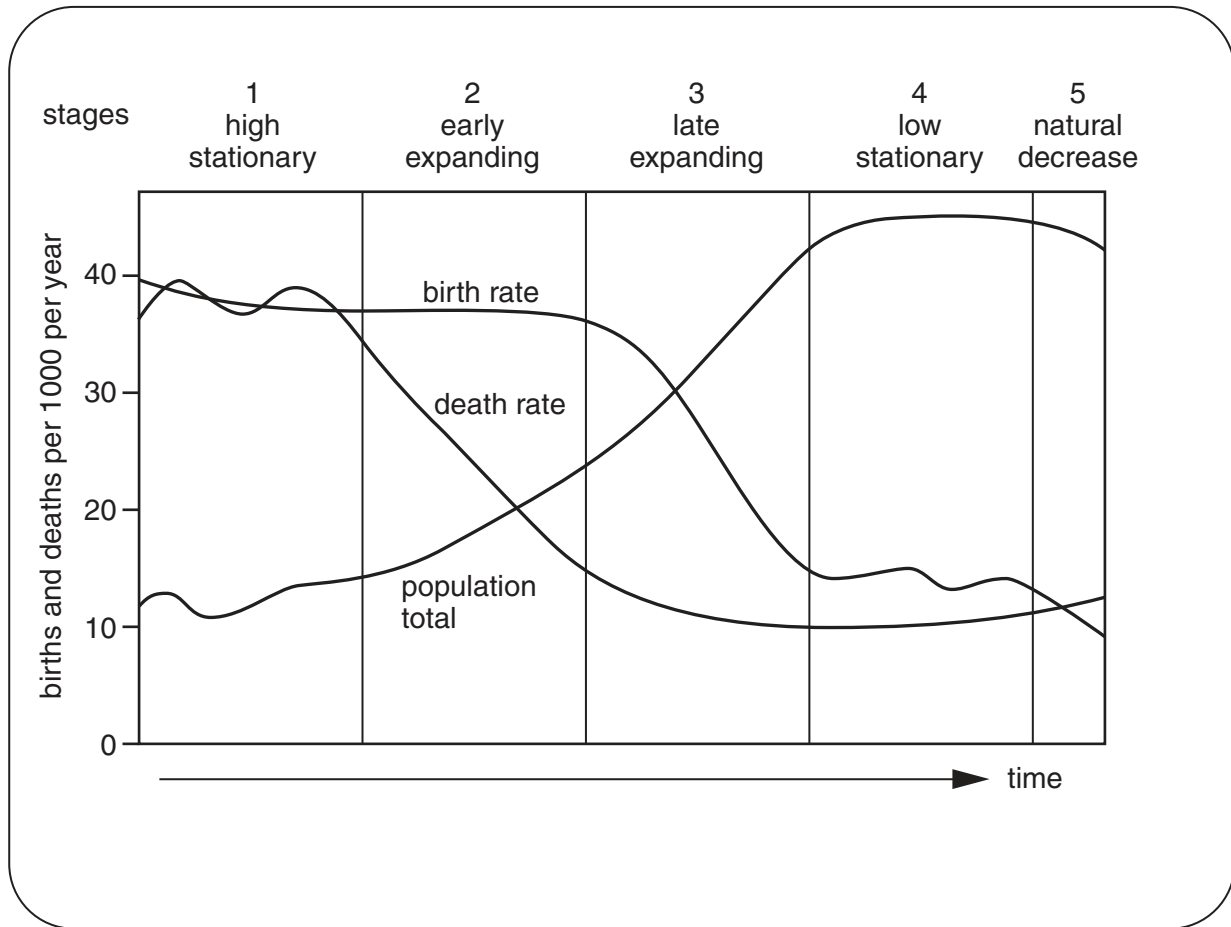
Photograph A for Question 6

A settlement at the edge of a city in an LEDC



Fig. 6 for Question 10

## The demographic transition model



**BLANK PAGE**

---

*Copyright Acknowledgements:*

- Question 4 Fig. 4           © International Food Policy Research Institute; [www.ifpri.org](http://www.ifpri.org); 2012.  
Question 5 Figs 5A and 5B   © United Nations Department of Economics & Social Affairs; [www.un.org/esa/population/unpop.htm](http://www.un.org/esa/population/unpop.htm).  
Question 6 Photograph A   © Ref: 19902090; FrankvandenBergh/iStock; *Slums*; [www.iStockphoto.com](http://www.iStockphoto.com).  
Question 10 Fig. 6       © P Guinness & G Nagle; *IGCSE Geography*; Hodder Education; 2003.

Permission to reproduce items where third-party owned material protected by copyright is included has been sought and cleared where possible. Every reasonable effort has been made by the publisher (UCLES) to trace copyright holders, but if any items requiring clearance have unwittingly been included, the publisher will be pleased to make amends at the earliest possible opportunity.

Cambridge International Examinations is part of the Cambridge Assessment Group. Cambridge Assessment is the brand name of University of Cambridge Local Examinations Syndicate (UCLES), which is itself a department of the University of Cambridge.